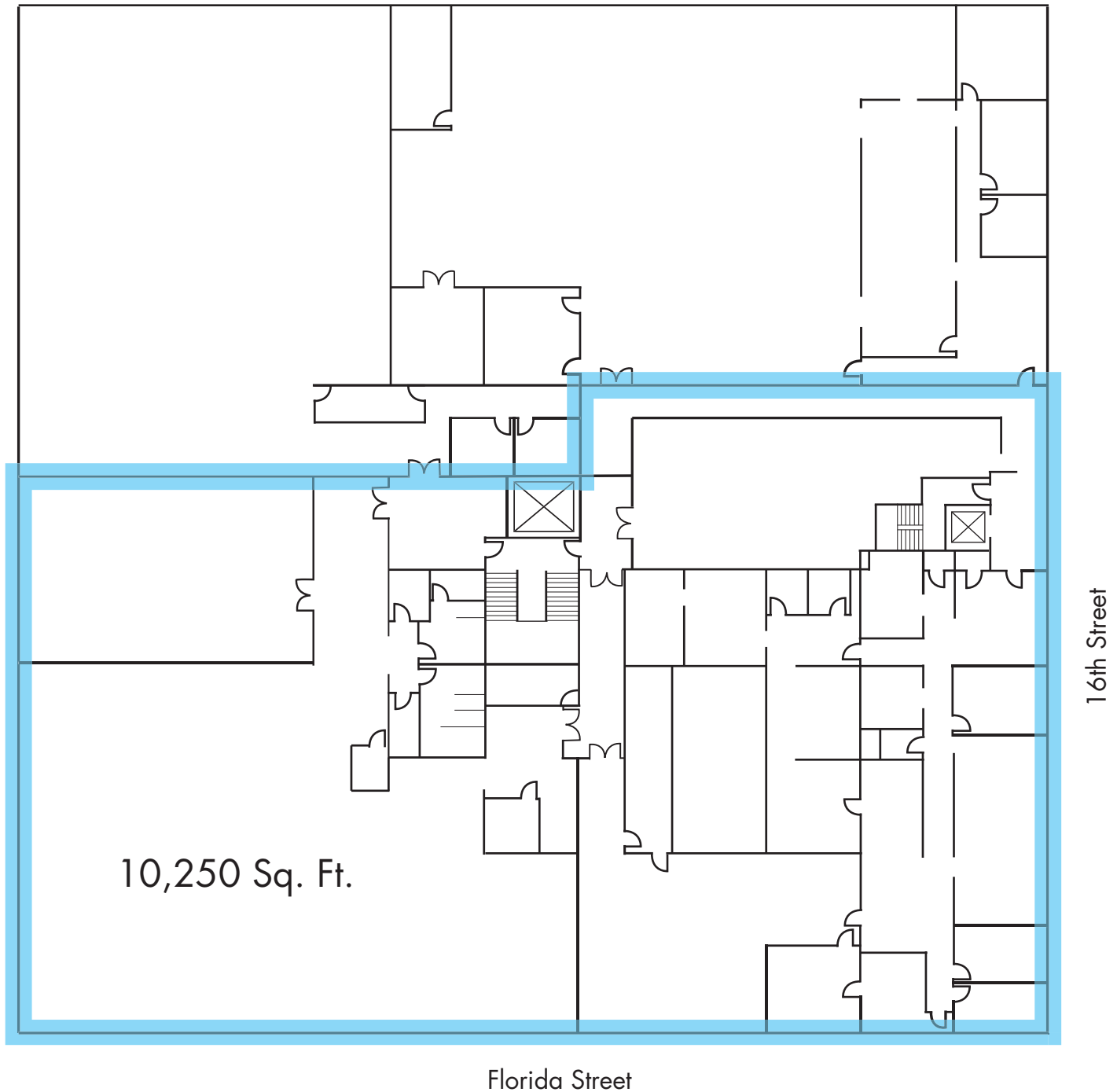


2525 16TH STREET

SAN FRANCISCO CA



FOR MORE INFORMATION PLEASE CONTACT:

DORON BARUTH doron@starboardnet.com

PH 415.765.6901 CELL 415.385.7933

DRE #00584810

 **STARBOARD TCN**
WORLDWIDE COMMERCIAL REAL ESTATE
Local Focus, Global Reach

The information has been secured by Starboard TCN from sources believed to be reliable.
It is not guaranteed, however, and should be verified prior to consummating any transaction.

 **TCN**
WORLDWIDE

33 NEW MONTGOMERY STREET | SUITE 1230 | SAN FRANCISCO | CA 94105 | 415.765.6900 | FAX 415.956.2003