

505 BEACH STREET

SAN FRANCISCO, CA



NORTH WATERFRONT FISHERMAN'S WHARF OFFICE SPACE

PREMISES

Restaurant Space For Lease - $\pm 3,075$ Sq. Ft. plus
1,538 Sq. Ft. Outdoor Patio/ Also Ideal for
Karate Pilates, Gym, Activities and Physical
Therapy

FIRST FLOOR $\pm 1,641$ RSF

- 3 private offices
- Conference Room

SUITE 205 $\pm 1,125$ RSF

- Four Private Offices
- Large work area
- Can be divided into two equal spaces
of 562 Sq Ft each

RATE \$24/RSF/Yr, Full Service

TERM Negotiable

FEATURES

- Muni stop directly in front of the building
- Parking available on premises
- Onsite management
- Close to the Golden Gate Bridge
- Furniture is available to create "Plug & Play" for
immediate move-in

FOR MORE INFORMATION PLEASE CONTACT

HANS HANSSON 415.765.6897

hans@starboardnet.com CA DRE LIC# 00872902

CRAIG HANSSON 415.694.5367

craig@starboardnet.com CA DRE LIC# 01841643



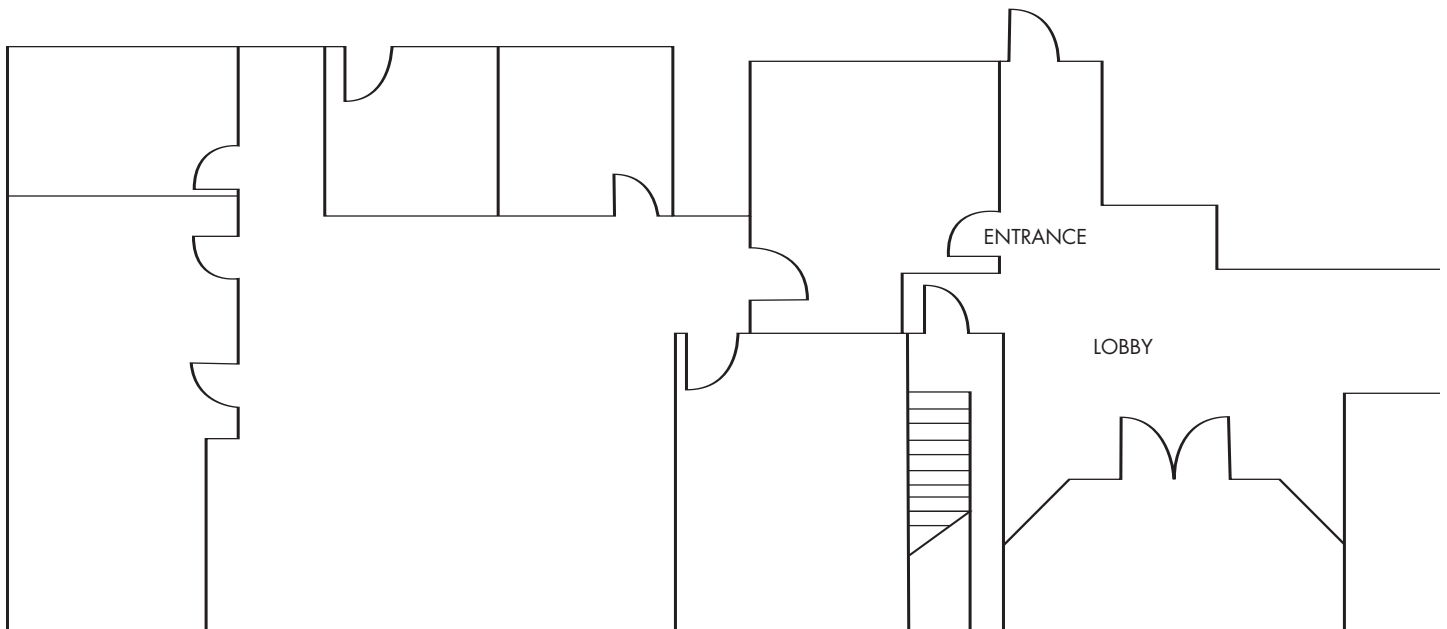
The information has been secured by Starboard TCN from sources believed to be reliable.
It is not guaranteed, however, and should be verified prior to consummating any transaction.



33 NEW MONTGOMERY STREET | SUITE 1230 | SAN FRANCISCO | CA 94105 | 415.765.6900 | FAX 415.956.2003

505 BEACH STREET

SAN FRANCISCO, CA



First Floor
±1,641 Sq Ft

FOR MORE INFORMATION PLEASE CONTACT

HANS HANSSON 415.765.6897

hans@starboardnet.com CA DRE LIC# 00872902

CRAIG HANSSON 415.694.5367

craig@starboardnet.com CA DRE LIC# 01841643



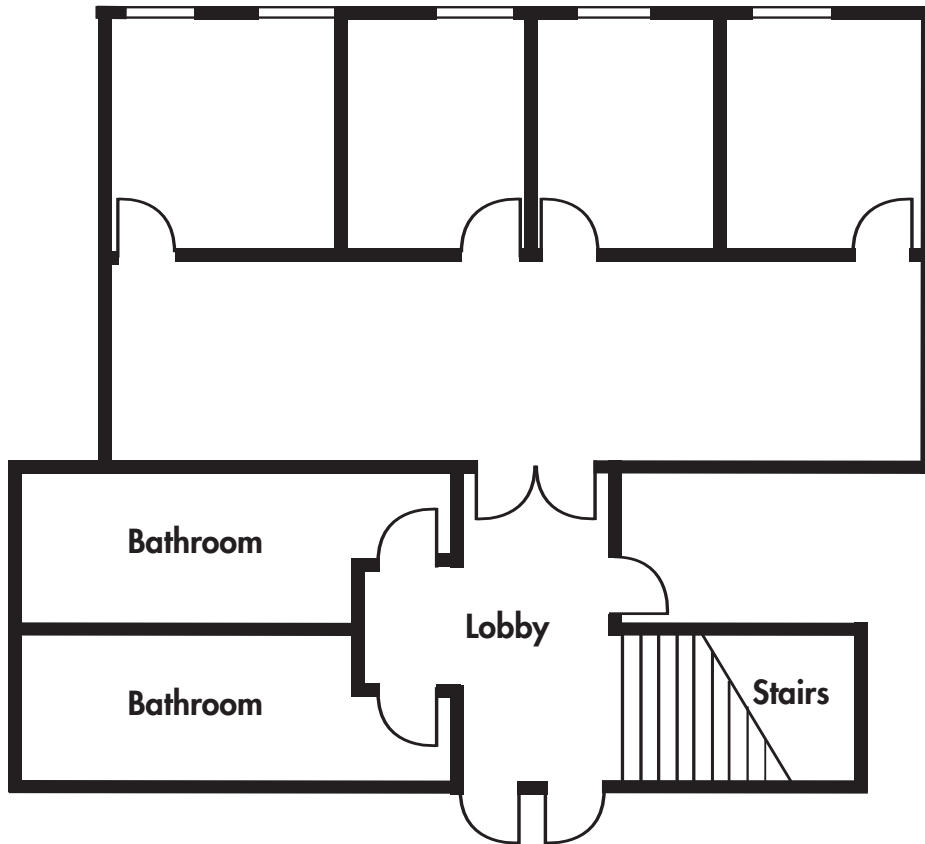
The information has been secured by Starboard TCN from sources believed to be reliable. It is not guaranteed, however, and should be verified prior to consummating any transaction.



33 NEW MONTGOMERY STREET | SUITE 1230 | SAN FRANCISCO | CA 94105 | 415.765.6900 | FAX 415.956.2003

505 BEACH STREET

SAN FRANCISCO, CA



Suite 205
±1,125 Sq Ft

FOR MORE INFORMATION PLEASE CONTACT

HANS HANSSON 415.765.6897

hans@starboardnet.com CA DRE LIC# 00872902

CRAIG HANSSON 415.694.5367

craig@starboardnet.com CA DRE LIC# 01841643

 **STARBOARD TCN**
WORLDWIDE COMMERCIAL REAL ESTATE
Local Focus, Global Reach

The information has been secured by Starboard TCN from sources believed to be reliable.
It is not guaranteed, however, and should be verified prior to consummating any transaction.

 **TCN**
WORLDWIDE

33 NEW MONTGOMERY STREET | SUITE 1230 | SAN FRANCISCO | CA 94105 | 415.765.6900 | FAX 415.956.2003